

Unit 9 Module A Notes Sections 23.1 – 23.2

View the PowerPoint, Videos, or Textbook for Module 9A.

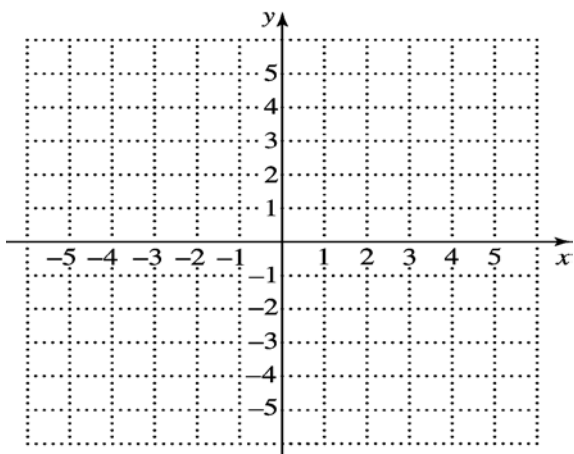
Vocabulary *Fill in the blanks.*

- (Section 23.1) A _____ is a rule that assigns to each member of some set (x values) exactly one member of another set (y values).
- (Section 23.1) A _____ is a rule that assigns to each member of some set at least one member of another set.
- (Section 23.2) If $f(3) = 7$, the corresponding ordered pair is _____.
- (Section 23.2) The _____ is the set of all first (x) coordinates.
- (Section 23.2) The _____ is the set of all second (y) coordinates.

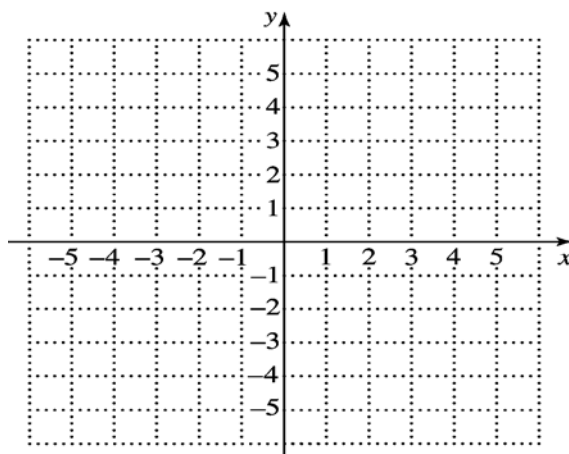
Problems *Show ALL steps.*

- (Section 23.1) Graph the following

$$y = f(x) = 3$$



$$-3x = 6$$



- (Section 23.1) Find the function values. $f(x) = |3 + x|$; $f(-4)$ and $f(4)$

$f(-4) = \underline{\hspace{2cm}}$

$f(4) = \underline{\hspace{2cm}}$

Name: _____

Instructor: _____

Date: _____

Class Time: _____

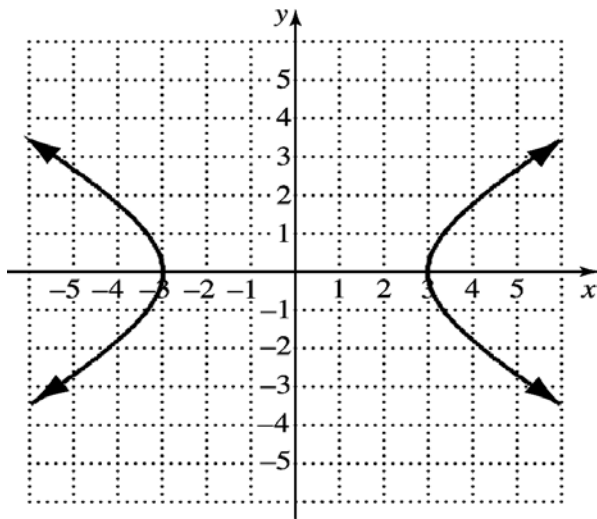
3. (Section 23.1) The function $w(t) = 170 - 2t$ can be used to estimate Janelle's weight, in pounds, t weeks after the start of a diet. a) Find Janelle's weight 12 weeks after the start of the diet. b) After how many weeks will Janelle weigh 156 lbs.?

a. _____

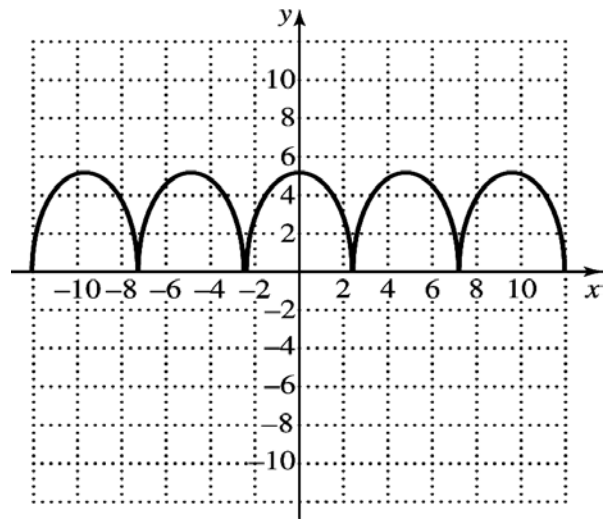
b. _____

4. (Section 23.2) Determine which graphs are functions (answer yes or no)

a. _____



b. _____



5. (Section 23.2) Find the domain

a. $g(x) = 8 - x^2$

b. $f(x) = \frac{4}{3x-2}$

a. _____

b. _____

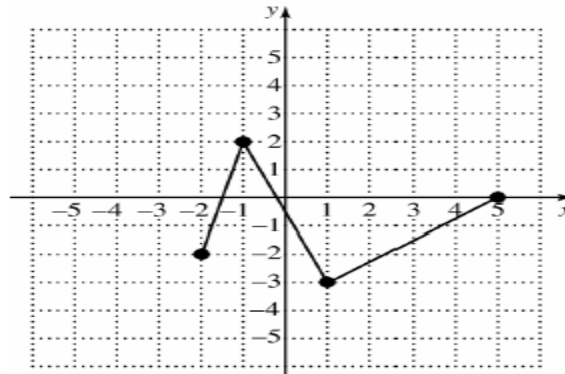
6. (Section 23.2) For the graph of function f at right, determine

a) $f(1)$;

b) the domain;

c) all x -values such that $f(x) = 2$

d) the range.



a. _____ b. _____ c. _____ d. _____