



Axial Skeleton

- Did you submit the pre-lab?
- Did you submit your post-lab from last week?

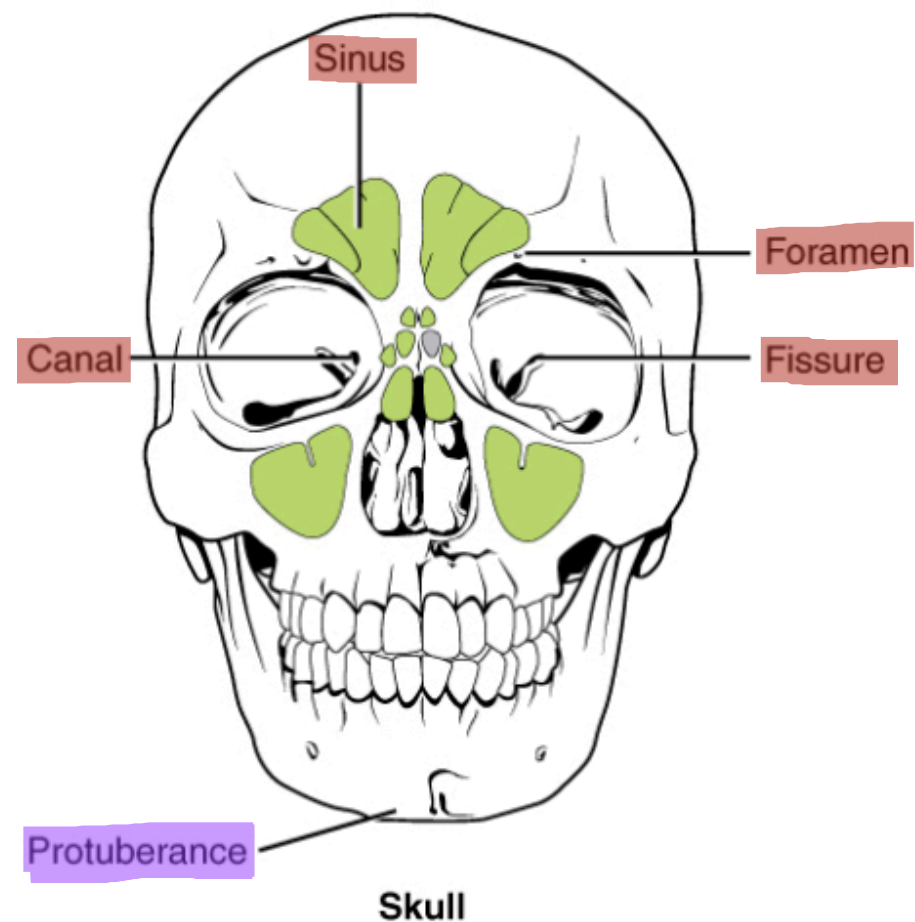
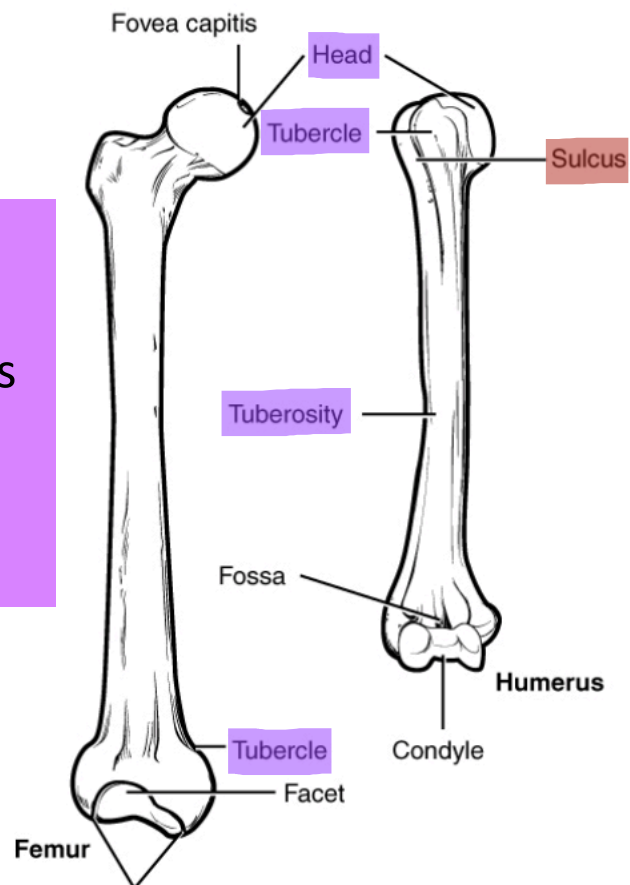
Axial Skeleton – Complete from before break

Bone Terminology and Axial Skeleton

- Case Study “Car Accident Woes” **(in pairs)**
- Activity 1: Bone Marking Terminology **(as a group)**
- Activity 2: Bones and Bone Markings of the Skull **(as a group)**
- Activity 3: Bones and Bone Markings of the Vertebral Column **(as a group)**
- Activity 4: Vertebral Column and Thoracic Cage **(as a group)**
- Putting it all Together

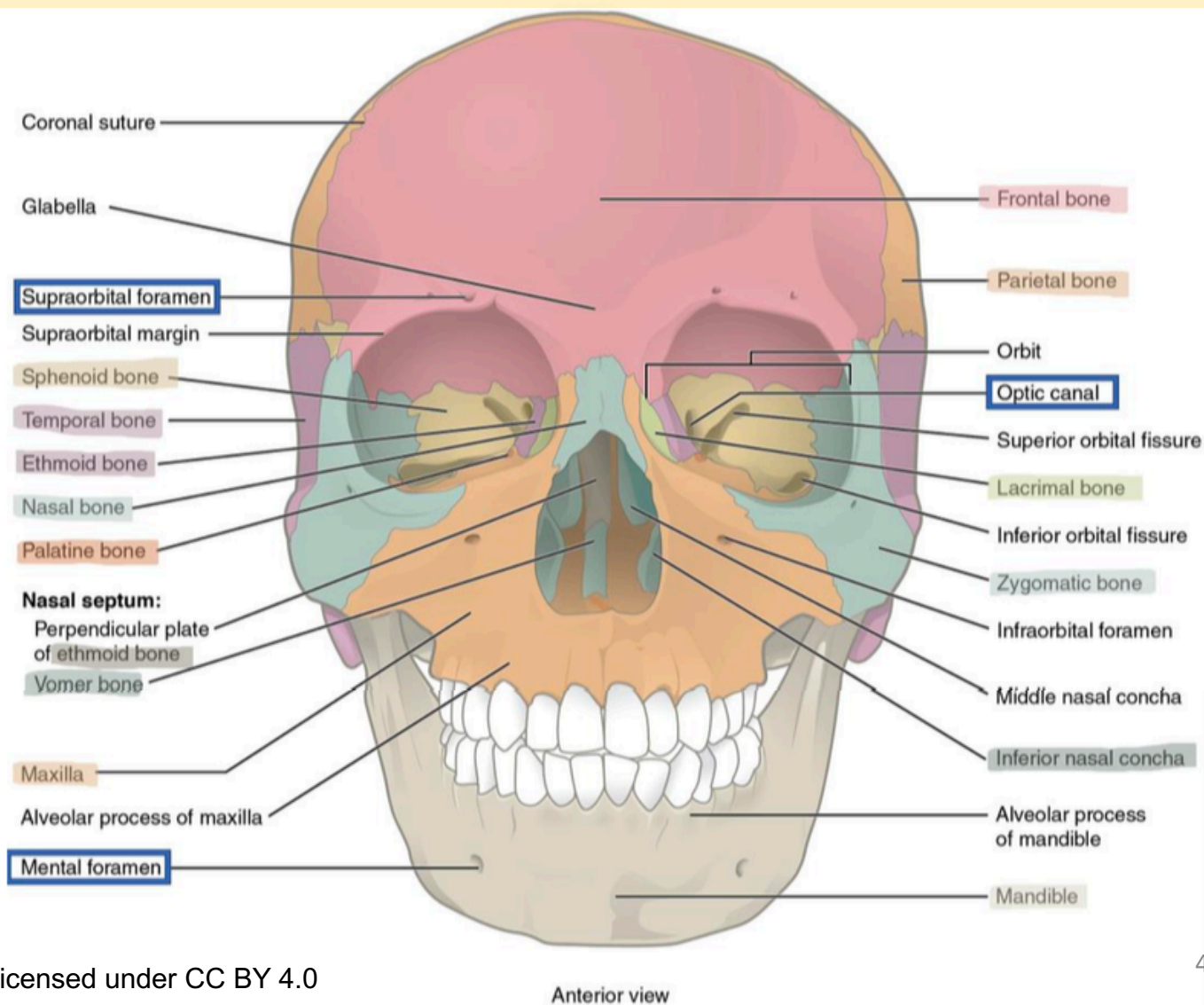
Bone Marking Terminology

You will be labelling these general markings on laminated images.



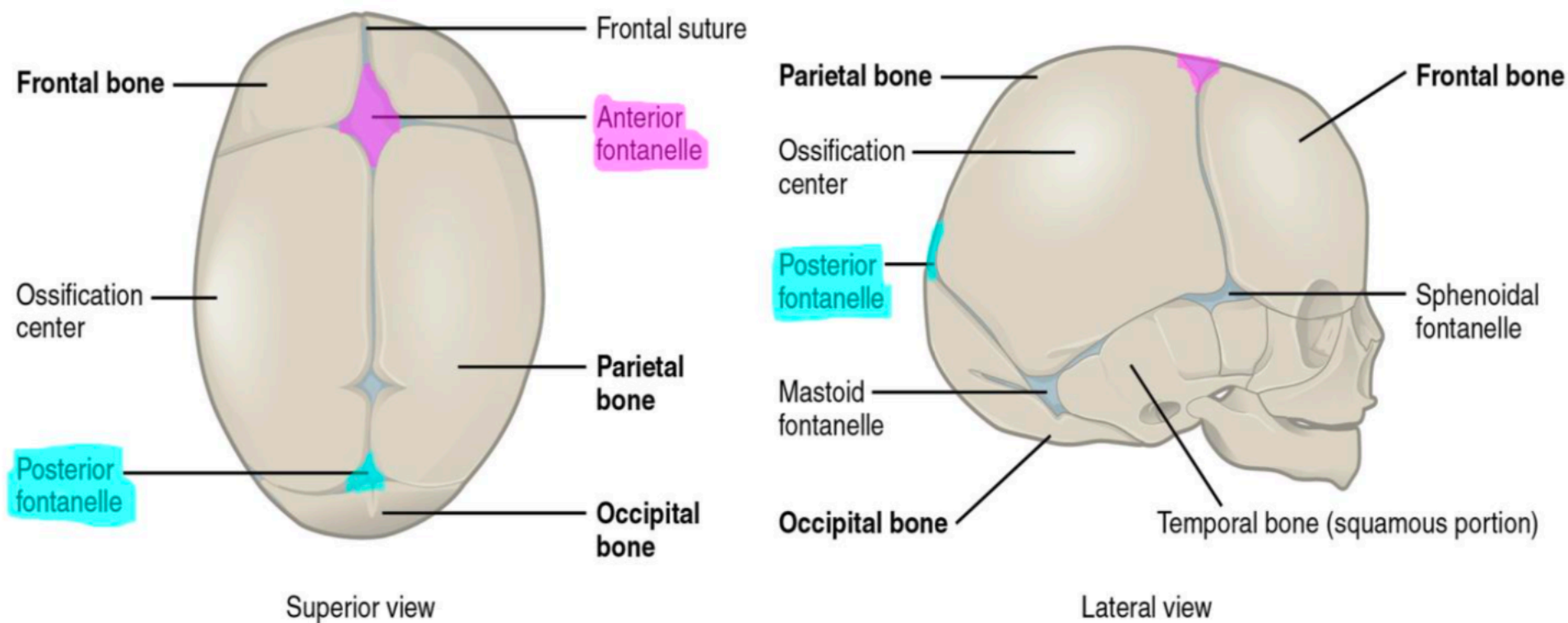
Bones and Bone Markings of the Skull

Today you will be learning and practicing the bones and markings of the skull. Use the pre-made labels to practice on the adult skull.



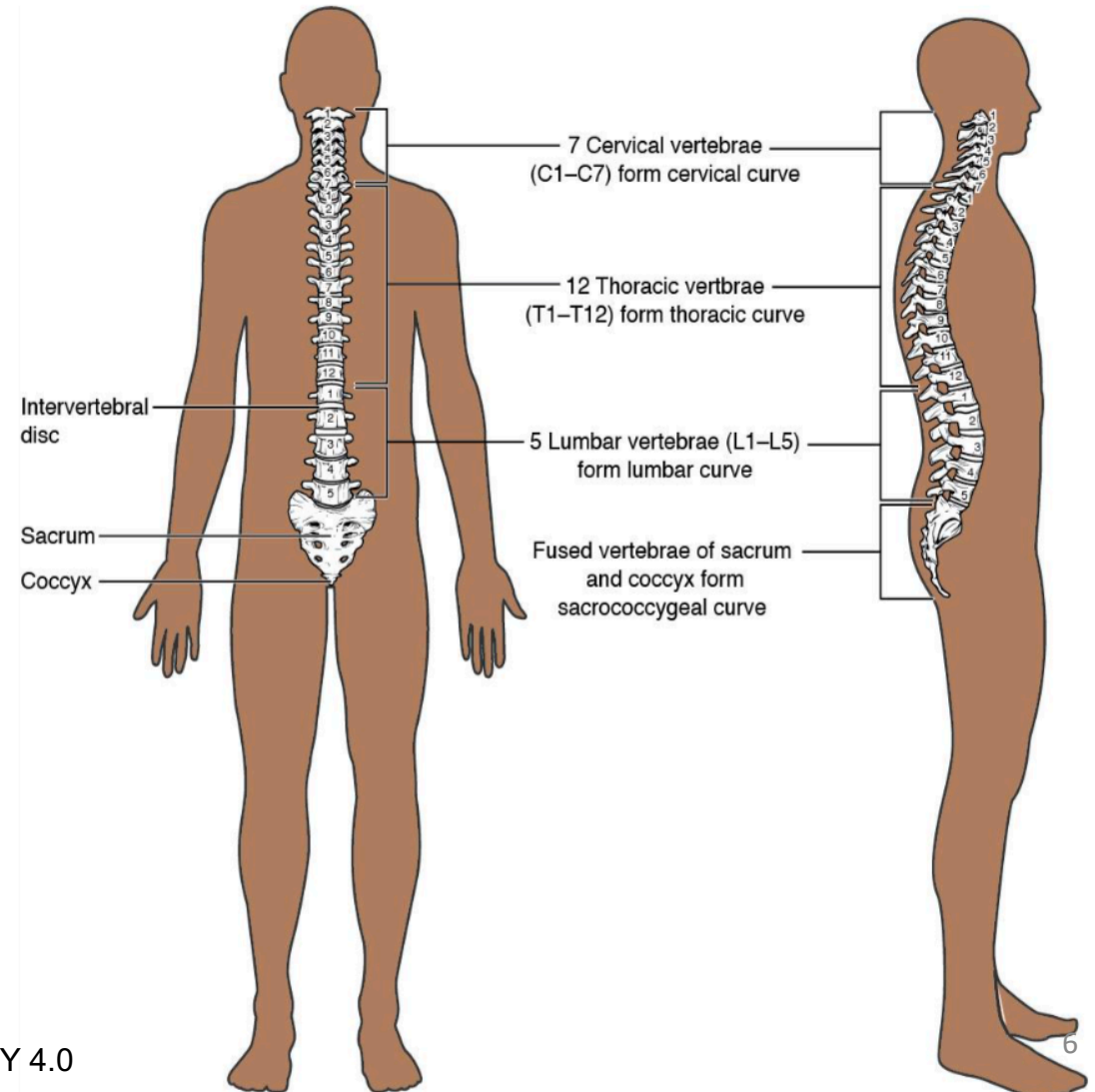
Bones and Bone Markings of the Skull

Bones of the fetal skull do not fuse completely until about 2 years of age. You will learn the “soft spots” or fontanelles of the fetal skull.



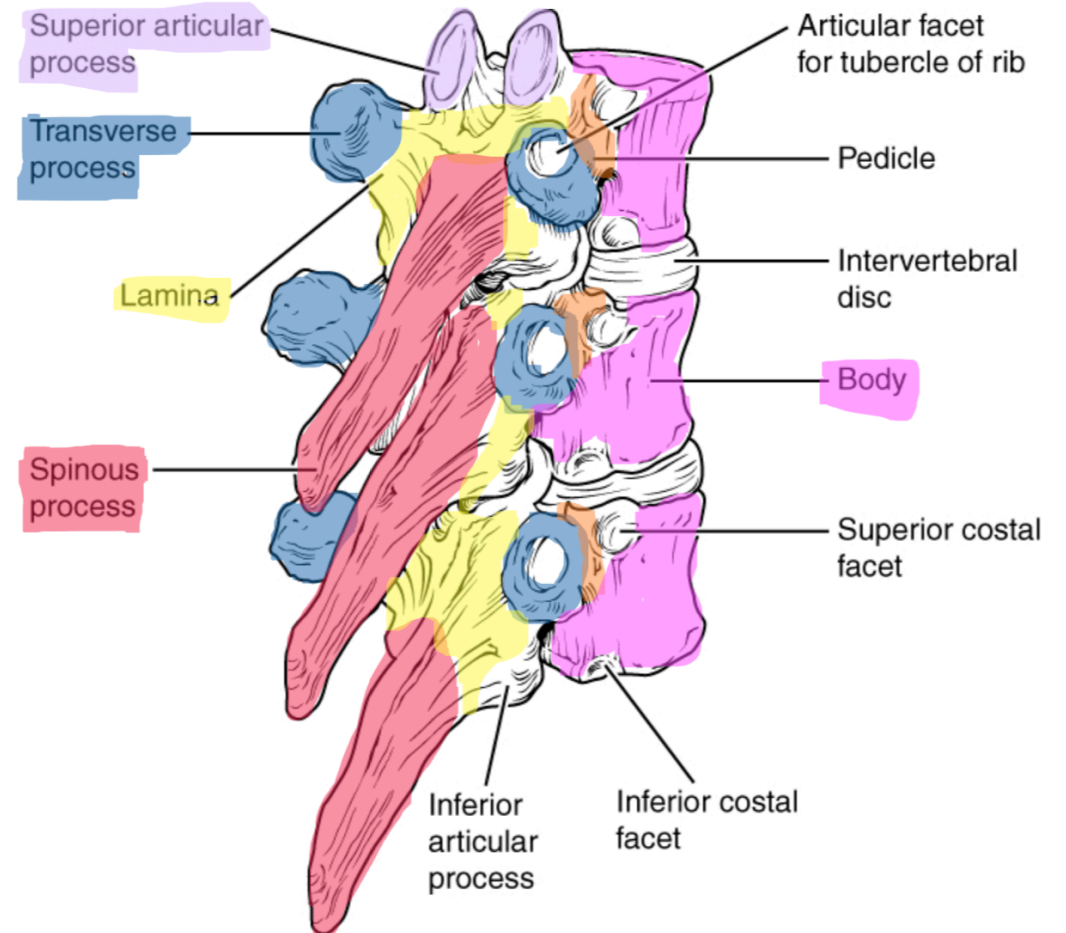
Bones and Bone Markings of the Vertebral Column

View the full vertebral column and pay close attention to the articulation points. You will then be learning the specific markings on the vertebrae.



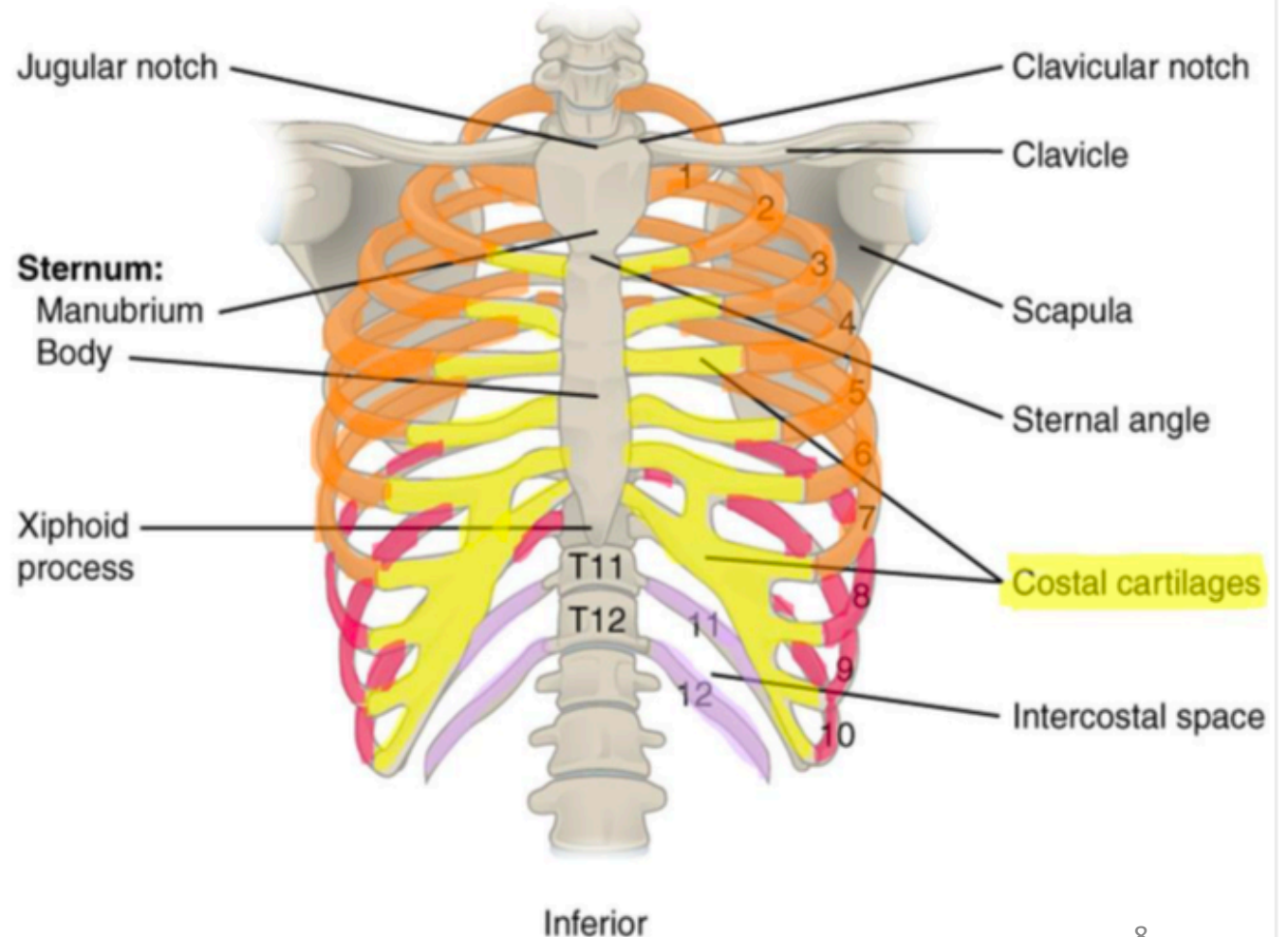
Bones and Bone Markings of the Vertebral Column

Pay close attention to the markings involved in the articulations between the vertebrae!



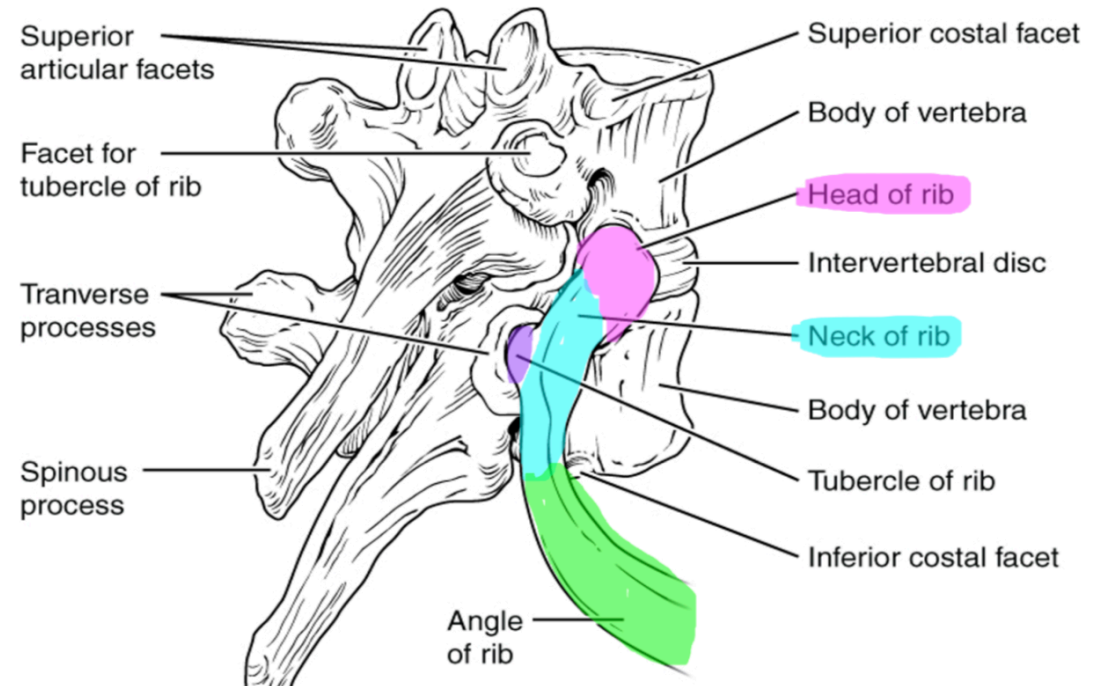
Bone and Bone Markings of the Thoracic Cage

Notice the three types of ribs that make up the thoracic cage (colored orange, red and purple). What is different about them?



Bone and Bone Markings of the Thoracic Cage

You will learn how the ribs and thoracic vertebrae articulate with one another.



Lab Clean-Up: Before you leave be sure to...

- Submit your in-lab work
- Remove and replace all of the terminology labels on the terminology sheets and return them to the binder
- Place the slides back in the slide boxes
- Return the microscopes (remember to put the stage all the way down and leave the scanning objective in place)
- Place all of the material back in the lab tray neatly
- Check the tray supply list with the supplies in the tray
- Return the trays to the side table