

OFFICE OF INSTITUTIONAL
EFFECTIVENESS & STUDENT SUCCESS

SPOTLIGHT

CHARTING STUDENT SUCCESS THROUGH DATA & RESEARCH

INEQUALITY: ISLANDS OF DISADVANTAGE



What is an
**ISLAND OF
DISADVANTAGE?**



How does
location
**IMPACT
OPPORTUNITY?**



What can
NOVA do to
**BREAK THE
CYCLE OF
POVERTY?**

APRIL 2018
VOLUME 1 ISSUE 4

NOVA
Northern Virginia
Community College

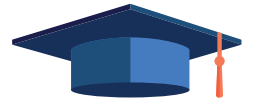
OPPORTUNITY IN OUR REGION

NORTHERN VIRGINIA NUMBERS



520,000

people across Northern Virginia live in one of 15 Islands of Disadvantage.¹

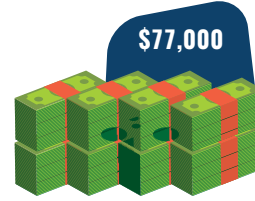


21%

of adults in Northern Virginia did not go to college.³



Median household income in Northern Virginia.²



Median household income in Islands of Disadvantage.²

37%

of adults in Islands of Disadvantage did not go to college.³

MOBILITY THROUGH EDUCATION

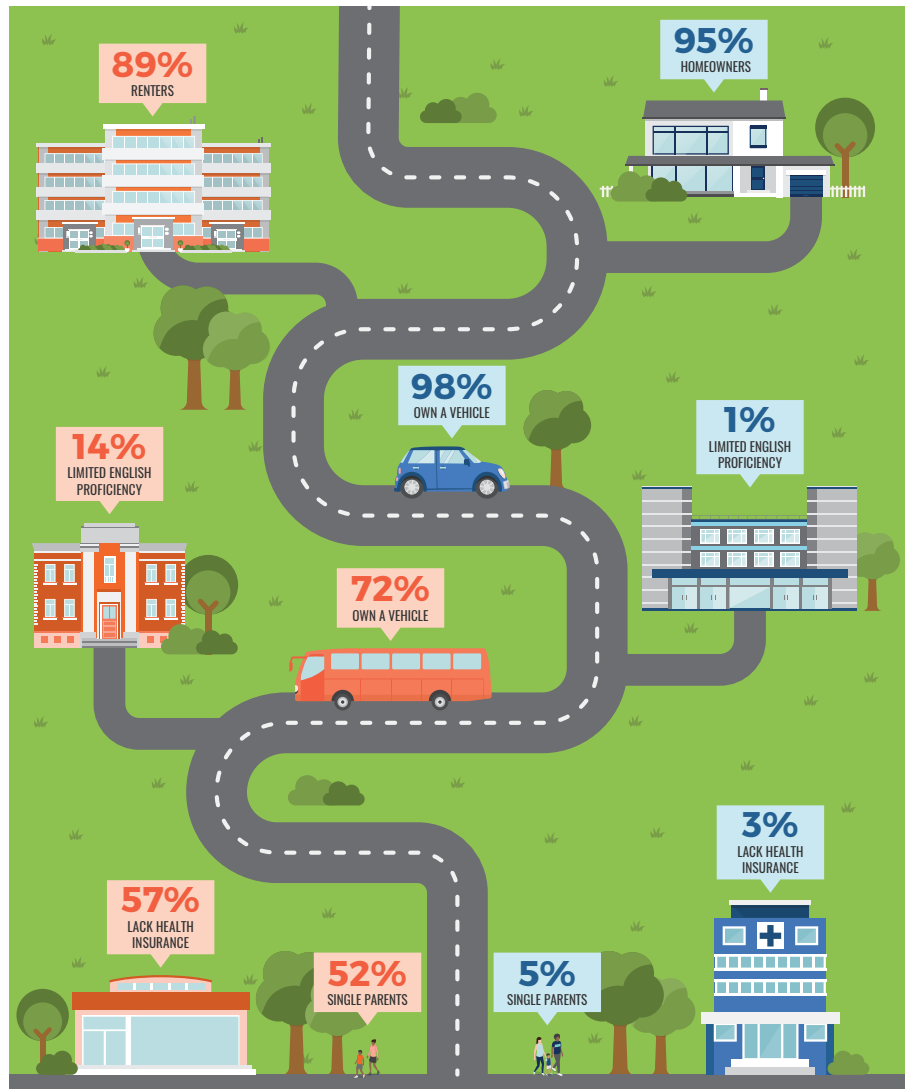
Northern Virginia is one of the most affluent regions in the commonwealth. However, interspersed among the affluent neighborhoods are fifteen “Islands of Disadvantage”—or, communities that experience disproportionate levels of economic challenge. Residents in these areas have lower incomes and lack consistent access to affordable housing, education, health care, and transportation. This negatively impacts health and well-being, leading to more injuries, illnesses, and lower life expectancies. These conditions present barriers to social and economic mobility, creating a cycle of poverty for many individuals and their families.

To help residents of Islands of Disadvantage (IODs) break the cycle of poverty, it will require collaboration from local and state governments, businesses, and schools, including NOVA. Since all fifteen IODs are within NOVA’s service area, many residents from these areas will enroll at NOVA at some point during their lives. Understanding the characteristics and experiences of individuals from these communities will be critical to NOVA’s ability to deliver targeted interventions and support services. The ultimate goal is for NOVA to contribute to the social and economic mobility of students from these areas and, over time, help Islands of Disadvantage to prosper as communities.

NEIGHBORING DIFFERENCES

Islands of Disadvantage are located in close proximity to more affluent neighborhoods. The two communities below border one another, although residents face very different circumstances. These conditions can drastically impact their health, well-being, and opportunity for social and economic mobility.

■ Island of Disadvantage ■ Bordering Neighborhood



¹ Woolf, Steven, Chapman, Derek, Hill, Latoya, Snellings, Lauren. (2017). *Getting Ahead: The Uneven Opportunity Landscape in Northern Virginia*. Northern Virginia Health Foundation.

² “S1101: Households and Families” and “B19013: Median Household Income in the Past 12 Months (In 2016 Inflation-Adjusted Dollars),” 2012–2016 American Community Survey 5-Year Estimates. U.S. Census Bureau.

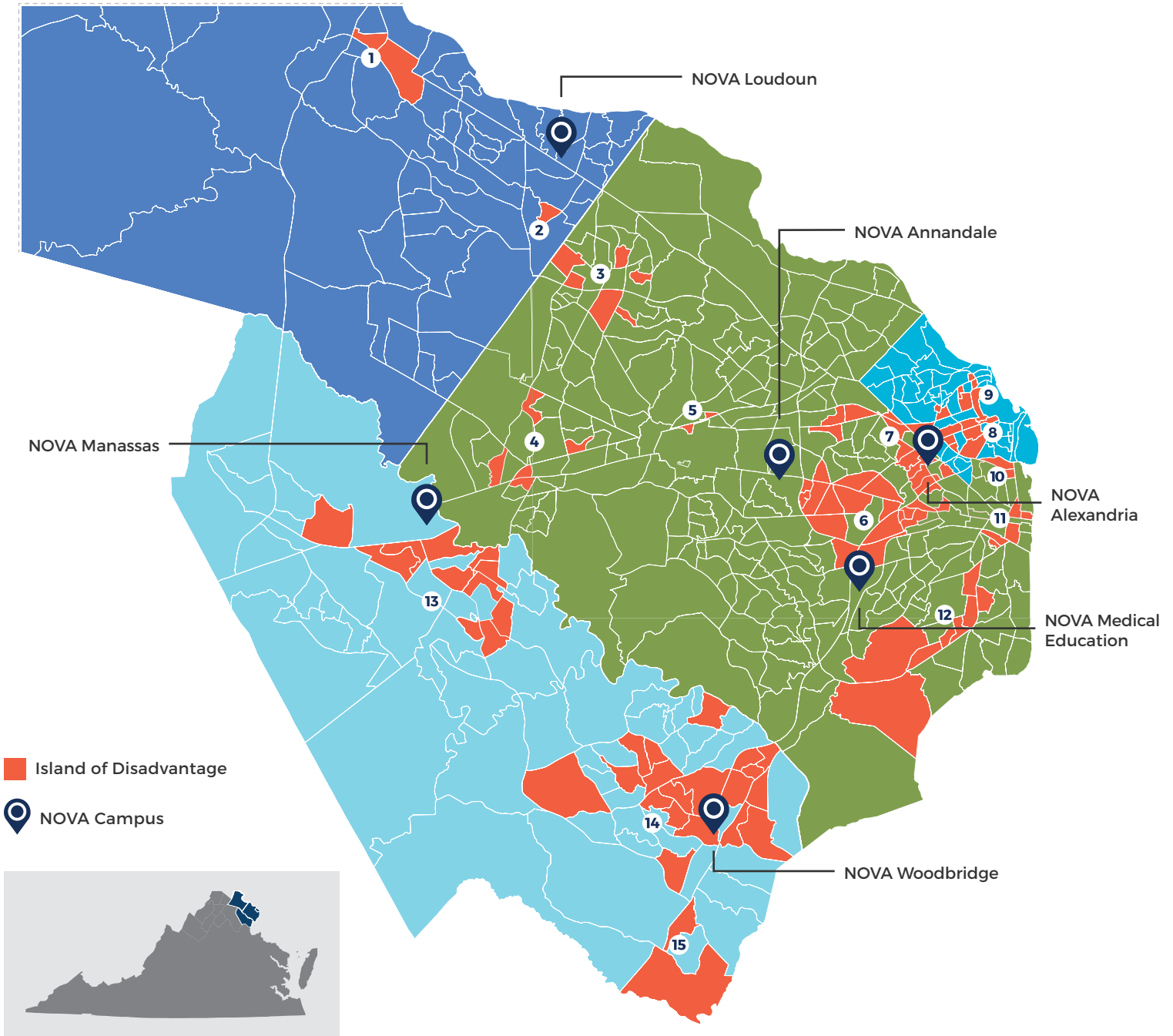
³ “S2301: Employment Status,” 2012–2016 American Community Survey 5-Year Estimates. U.S. Census Bureau.

⁴ (2016–2017). Virginia Department of Education School Quality Profiles.

DISADVANTAGE IN NOVA'S SERVICE AREA

The fifteen Islands of Disadvantage are comprised of 110 census tracts located across nine counties in Northern Virginia: Alexandria, Arlington, Fairfax, Fairfax City, Falls Church, Loudoun, Manassas, Manassas Park, and Prince William. Many IODs are located only a few miles from a NOVA campus, and many residents will enroll at NOVA at some point during their lives.

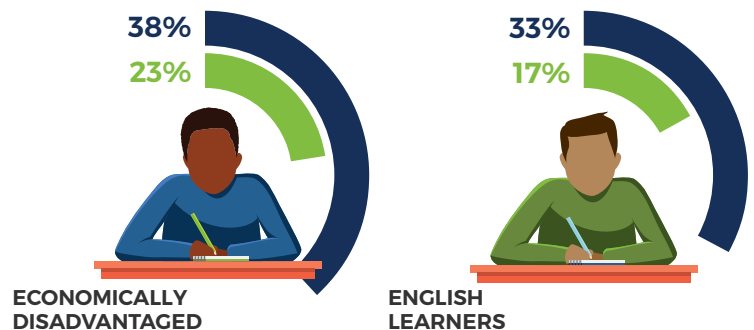
NOVA's proximity to these neighborhoods positions the College to help residents break out of the cycle of poverty. By providing an affordable and accessible path to a two- or four-year degree, NOVA can help individuals find more stable employment and earn higher wages. Further, earning a degree and securing better employment can lead to the social and economic mobility of students from these communities.



EDUCATION OUTLOOK

High schools located within the fifteen Islands of Disadvantage serve larger proportions of students who are economically disadvantaged and/or have limited English proficiency. These characteristics can impact access to and success in college, so targeted interventions and support services will be critical to helping students from these neighborhoods succeed at NOVA and beyond.⁴

■ High schools located in IODs ■ High schools not located in IODs



LEARN MORE

RESOURCES FOR STUDENTS, FACULTY, AND STAFF

Improving the well-being and social and economic mobility of residents of Islands of Disadvantage will require local and state governments, businesses, employers, community organizations, and schools to work together. A collaboration across these groups can lead to healthier, more vibrant communities and a stronger, more educated workforce.

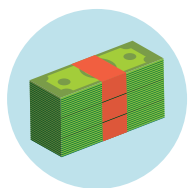
NOVA can help residents of these neighborhoods to break the cycle of poverty by providing education and job training. The Financial Stability Program and other offices at NOVA provide support services for students facing financial hardships.



TRANSPORTATION ASSISTANCE

The **NOVA Shuttle** provides regular service between NOVA campuses and nearby metro stations. Students, faculty, and staff can ride the shuttle for free by showing their NOVA card. Metro and county buses provide additional transportation options for getting to and from campus.

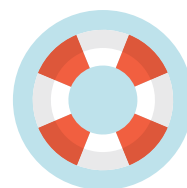
See shuttle routes and learn more about transportation options at: <https://www.nvcc.edu/shuttle/index.html>



FINANCIAL AID

The **Financial Aid Office** can help students understand how they can cover the cost of college. The Office can help students understand their options and apply for scholarships, grants, loans, and need-based financial aid, such as Pell Grants.

Learn more about financial aid and how to apply at: <http://www.nvcc.edu/financialaid/index.html>



EMERGENCY SUPPORT

The **Student Emergency Grant** program provides one-time financial support to students experiencing an enrollment-threatening financial emergency, such as job loss, homelessness, medical or dental emergencies, theft, or loss of child care.

Find the application and more information about eligibility at: <https://blogs.nvcc.edu/wssn/student-emergency-grant>



FOOD PANTRIES

The **Student Food Program** provides access to free food and basic necessities for all NOVA students and their families. Food pantries are located on each of NOVA's six campuses and at the Student and Family Resource Center at Pitney Bowes.

Learn more about food pantries and find locations at: <https://blogs.nvcc.edu/wssn/food-pantries>

VISIT SPOTLIGHT ONLINE AT BLOGS.NVCC.EDU/SPOTLIGHT

THE OFFICE OF INSTITUTIONAL EFFECTIVENESS & STUDENT SUCCESS

Dr. George Gabriel, VP of Institutional Effectiveness and Student Success

Elizabeth (Lisa) Hill, Assistant Dean Graphic Design, Alexandria

Designers: Jennifer Knotts | John Shea