

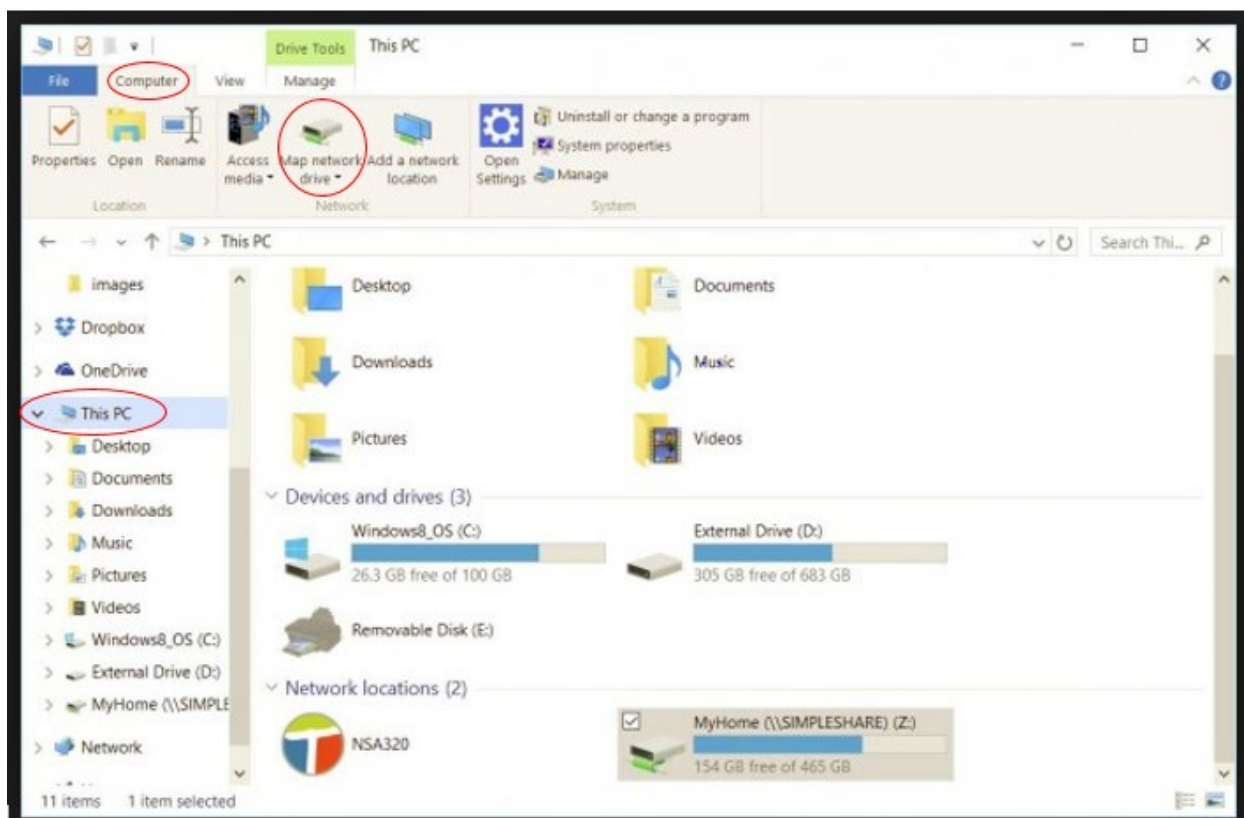
Mapping a Network Drive using Windows 10

Just follow these steps:

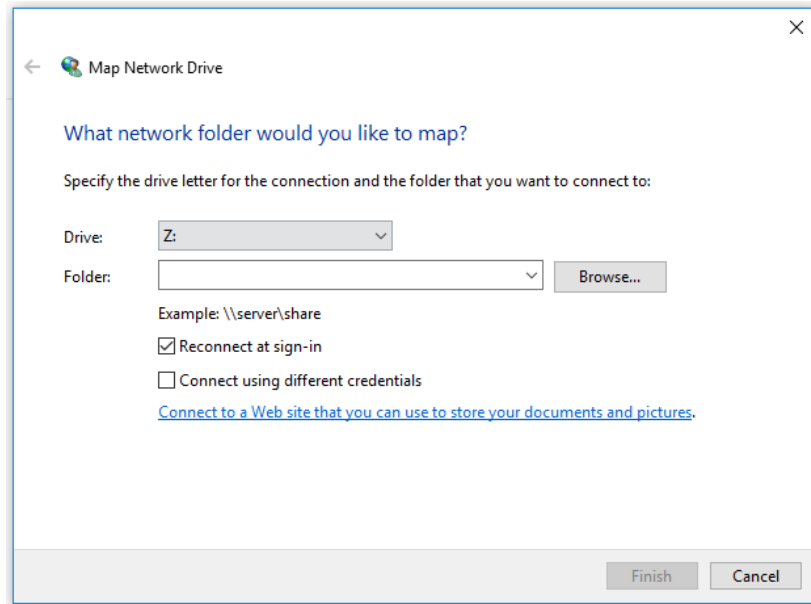
1. Open File Explorer
 - Press the Windows Icon + E to open a File Explorer **window**.
 - Or, click the magnifying glass in lower left of screen and type File Explorer



2. Choose **This PC** from the left side of the screen
 - This step isn't necessary in Windows 7, because you already see the My Computer window. Like the This PC window, it lists local storage and network locations.
3. Click the **Computer** tab.



4. Click the **Map Network Drive** button
 - The Map Network Drive dialog box appears.



5. Choose a **drive** letter
 - Pick something from the list of available letters (it's common to pick "H").
6. In the Folder box type the following: **\\n-eqnacifs1\an01\home\username** (replacing "username" with your NVCC user name).
7. Ensure that the **Reconnect at Sign-in** (or Logon) option is checked.
8. Click the **Finish** button.
9. Enter your user name in the following way: **NVCC\username**
10. Enter your **password**.

You see a new “drive” appear in the window, one with the letter you assigned in Step 5. Opening this drive icon displays the contents of the shared folder on the network.

Find further information at this link:

https://www.google.com/search?q=mapping+a+network+drive+using+Windows+10&rlz=1C1GC EB_enUS835US835&tbm=isch&source=iu&ictx=1&fir=sKNLLpC5d7IdhM%253A%252Cy1vkQ-cPnT1UKM%252C_&vet=1&usq=A14_kTflmkEZkgAW3SE9liDNtBm3lf1Wg&sa=X&ved=2ahUKEwjkeqn2ZjjAhWRG80KHQd5AFoQ9QEwAHoECAgQAw#imgrc=sKNLLpC5d7IdhM: